

EC24-4K5MB



Key Features

- Lm/m (up to): 1075 Lm/m
- Lm/W (up to): 112 Lm/W
- Run Length (Max): 5 m
- Available Colours: 2700K, 3000K, 4000K, 6500K
- Warranty: 3 Years

24V

>90 CRI

HORIZ BEND

2oz PCB

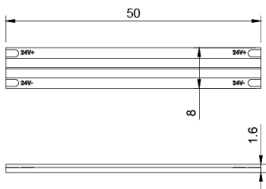
IP20

Mechanical Data

Bend Direction	Horizontal
Cable Both Ends	Yes
Cable Length	500 mm
Cable Sheath Material	PVC
Cable Weight	20 AWG
LED Chip Brand	SAN'AN
LED Chip Type	COB
Copper Foil Weight	2 oz
Cut Points	50 mm

LED Module Replaceable	No
LED Pitch	2.083333333 mm
LEDs Per Unit	24
LEDs Per Metre	480
LEDs Total	2400
Min · Bend Radius	30 mm
PCB Type	Flexible
Product Weight	120 g
Self Adhesive Brand	3M tape
Self Adhesive Model Number	55230H
Body Colour	White
Entry Cable Direction	End
Product Dimensions	5000x8x2 mm

Dimensions



## Input

Input Voltage	24 V
---------------	------

## Control

Default PWM Frequency	50 Hz
-----------------------	-------

Dimmable	Yes
----------	-----

## Electrical Data

Constant Voltage / Constant Current	CV
-------------------------------------	----

Current Max · @5 Metre	1.925A
------------------------	--------

Current Max · Rated	0.44 A
---------------------	--------

Wattage Max · @1 Metre	10.5 W
------------------------	--------

Wattage Typ · @1 Metre	9.6 W
------------------------	-------

Wattage Typ · @5 Metre	42 W
------------------------	------

Wattage Typ · @Max Run Length	42 W
-------------------------------	------

Current Typ · @Max Run Length	1.75 A
-------------------------------	--------

Max · Run Length	5 m
------------------	-----

## Protection

Electrical Safety Class	III
-------------------------	-----

## Photometric Data

CRI	90
-----	----

Luminous Intensity	233.3 cd
--------------------	----------

Peak Luminous Intensity	233.3 cd
-------------------------	----------

SDCM	< 5
------	-----

Lumen Total	5175 Lm
-------------	---------

Lumens Per Metre	1035 Lm/m
------------------	-----------

0161 507 9249 | support@ultraleds.co.uk | www.ultraleds.co.uk | Manchester, M17 1SJ Date: 08/07/2025

Ultra LEDs have taken reasonable care to ensure that the information in this datasheet is accurate at time of publication however it should be noted that all specifications are subject to tolerance. Descriptive specifications such as colour are subjective. Ultra LEDs reserve the right to update specifications without notice. The information in the datasheet may only be relied on by customers of Ultra LEDs in accordance with applicable terms and conditions

Lumens Per Watt	108 Lm/W
Wavelength	577.9 nm
R9 Value	54
CCT	4000 K

**Environment**

Application Environment	Indoor
Anti-Yellowing	No
Ingress Protection (IP)	IP20
Interior or Exterior Use	Interior
Solvent Resistant	No
Saltwater Resistant	No
UV Resistant	No

**Efficiency**

Energy Efficiency Class	F
L70B50	36000 Hours
L80B10	36000 Hours
L90B10	24000 Hours
LM80	10000Hours
Lumen Maintenance Factor	0.9707
Rated Life	36000 Hours
Survival Factor	0.9
Switch Cycles	10000